

villa life right at edge of delhi



presidential villas | **international
city**

FLOOR PLANS

PRESIDENTIAL VILLA

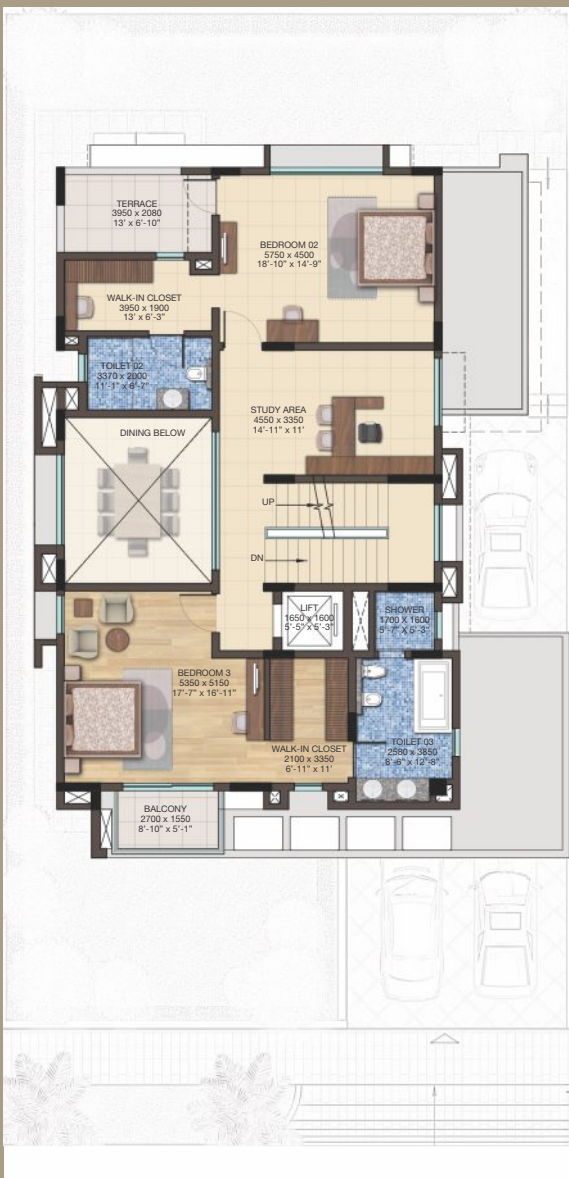
PLOT AREA 418 SQ.MT. (500 SQ.YD.)

SALEABLE BUILT-UP AREA 681 SQ.MT. (7,330.89 SQ.FT.)



GROUND FLOOR

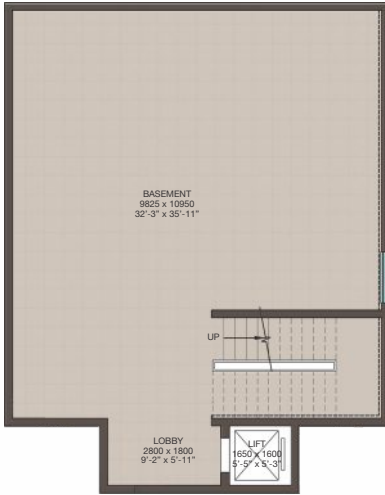
5750 x 4500
18'-10" x 14'-9"



FIRST FLOOR



SECOND FLOOR



BASEMENT



we will be glad to hear from you

**|international
city** gurgaon

development partners

CHINTELS
Building the future NOW

QVC
REALTY CO.